

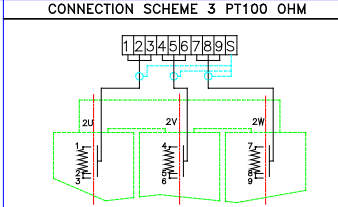
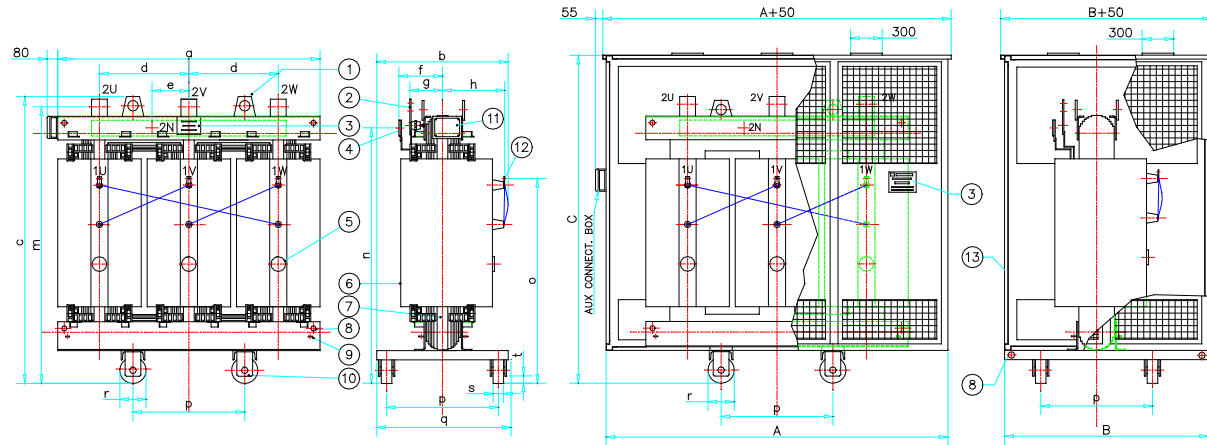
ENCLOSURE D



TECHNICAL AND ELECTRICAL CHARACTERISTICS OF CAST RESIN TRANSFORMERS CLASS 24kV

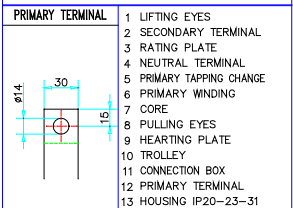
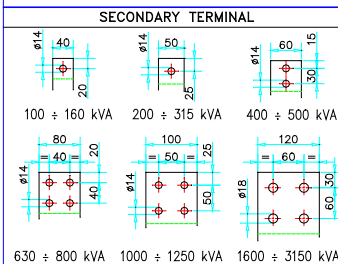
04-2000

Ref. standards: IEC-726



TAPS FOR PRIMARY VARIATION

VAR. %	POSITIONS
+5%	6-5
+2.5%	5-7
0	7-4
-2.5%	4-8
-5%	8-3



We reserve the right to change the technical datas without advising

kVA	a (mm)	b (mm)	c (mm)	d (mm)	e (mm)	f (mm)	g (mm)	h (mm)	m (mm)	n (mm)	o (mm)	p (mm)	q (mm)	r (mm)	s (mm)	t (mm)	Weight (Kg)	Air for cooling (mc/min)	A (mm)	B (mm)	C (mm)	Weight (Kg)	Po (W)	Pcc 75° (W)	Pcc 120° (W)	Vcc (%)	Io (%)	LpA (dB)	η 4/4 cosφ=1	η 4/4 cosφ=0.9	η 4/4 cosφ=0.8
100	1130	720	1220	380	140	230	150	320	1155	1085	820	500	600	125	40	35	550	7	1750	1100	1600	250	480	1700	1950	6	2.3	48	97.82	97.57	97.27
160	1200	720	1235	400		230	150	320	1185	1115	875						700	11					650	2500	2850		2	51	98.03	97.81	97.53
250	1280	770	1290	430		250	165	370	1265	1165	900						950	15					880	3300	3800		1.8	54	98.32	98.14	97.91
315	1350	740	1380	455		260	170	340	1355	1255	905						1150	18					1030	4000	4600		1.7	56	98.40	98.22	98.00
400	1400	825	1420	470		265	175	350	1405	1280	915						1350	22					1200	4800	5500		1.5	57	98.50	98.33	98.12
500	1400	825	1540	470		265	180	350	1525	1400	1175						1600	26					1400	5900	6780		1.4	57	98.54	98.37	98.17
630	1500	855	1610	505		280	190	380	1590	1455	1195						1850	30					1650	6800	7800		1.3	58	98.65	98.50	98.32
800	1550	855	1735	520	285	195	380	1715	1580	1295	2200	35	2000	8000	9200	1.1	59	98.75	98.61	98.43											
1000	1640	1000	1920	550	250	300	205	400	1895	1740	1405	850	1000	200	70	50	2700	42	2250	1350	2400	380	2300	9400	10800	8	1	60	98.83	98.70	98.53
1250	1760	1020	1945	590		310	215	420	1920	1765	1415						3200	50					2700	11500	13100		0.9	62	98.86	98.73	98.58
1600	1850	1040	2200	620		325	225	440	2170	1980	1625						3900	60					3100	14000	15800		0.9	62	98.93	98.81	98.66
2000	1940	1160	2240	650		330	230	460	2210	2020	1645						4700	72					4000	16000	18000		0.8	63	99.00	98.88	98.75
2500	2000	1160	2365	670		385	260	460	2335	2145	1655						5650	91					5000	19000	21850		0.7	65	99.04	98.93	98.80
3150	2240	1220	2390	750		395	270	520	2360	2170	1665						6550	93					5600	21000	24150		0.6	66	99.15	99.06	98.94