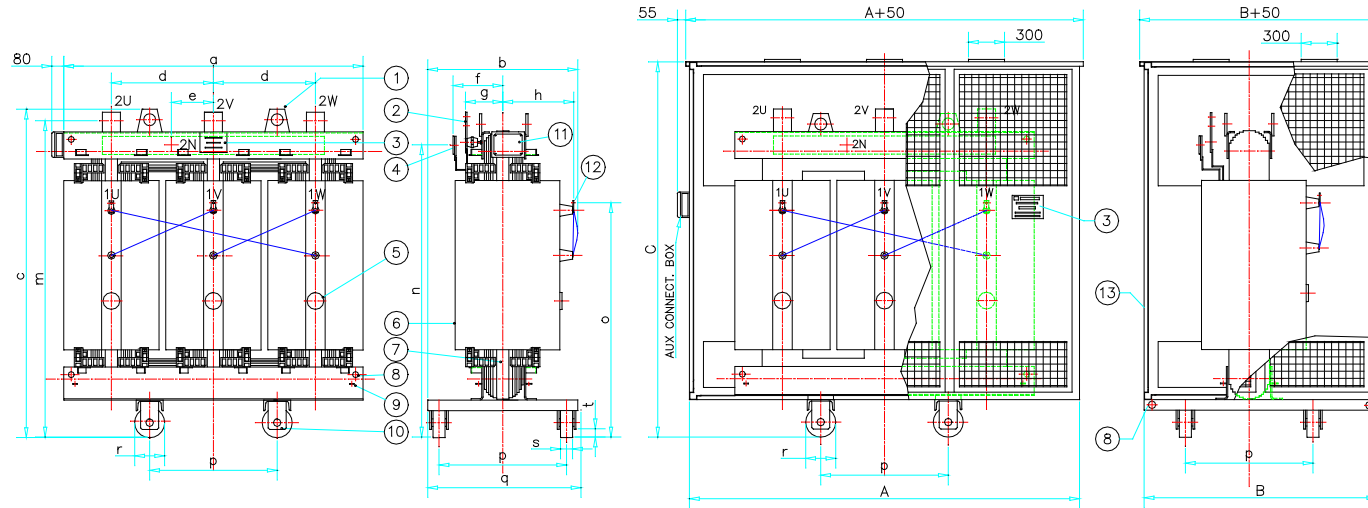
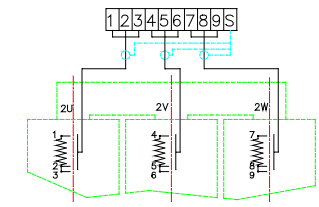




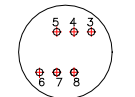
TECHNICAL AND ELECTRICAL CHARACTERISTICS OF CAST RESIN TRANSFORMERS CLASS 17,5kV



CONNECTION SCHEME 3 PT100 OHM

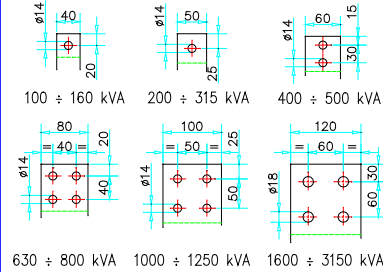


TAPS FOR PRIMARY VARIATION



VAR. %	POSITIONS
+5%	6-5
+2.5%	5-7
0	7-4
-2.5%	4-8
-5%	8-3

SECONDARY TERMINAL



- PRIMARY TERMINAL
-
- 1 LIFTING EYES
 - 2 SECONDARY TERMINAL
 - 3 RATING PLATE
 - 4 NEUTRAL TERMINAL
 - 5 PRIMARY TAPPING CHANGE
 - 6 PRIMARY WINDING
 - 7 CORE
 - 8 PULLING EYES
 - 9 HEATING PLATE
 - 10 TROLLEY
 - 11 CONNECTION BOX
 - 12 PRIMARY TERMINAL
 - 13 HOUSING IP20-23-31

We reserve the right to change the technical datas without advising

kVA	a (mm)	b (mm)	c (mm)	d (mm)	e (mm)	f (mm)	g (mm)	h (mm)	m (mm)	n (mm)	o (mm)	p (mm)	q (mm)	r (mm)	s (mm)	t (mm)	Weight (Kg)	Air for cooling (mc/min)	A (mm)	B (mm)	C (mm)	Weight (Kg)	Po (W)	Pcc 75° (W)	Pcc 120° (W)	Vcc (%)	Io (%)	LpA (dB)	η 4/4 cosφ=1	η 4/4 cosφ=0.9	η 4/4 cosφ=0.8
100	1070	710	1165	355	140	225	145	300	1115	1045	835	520	620	125	40	35	500	7	1750	1100	1600	250	480	1700	1950	6	2.3	48	97.82	97.57	97.27
160	1140	730	1185	380		230	150	320	1135	1065	845						630	11					650	2400	2760		2	51	98.09	97.88	97.61
250	1215	740	1240	405		250	165	330	1215	1115	865						900	15					880	3300	3800		1.8	54	98.32	98.14	97.91
315	1300	770	1340	430		255	165	360	1315	1215	870						1050	18					1030	4000	4600		1.7	56	98.40	98.22	98.00
400	1350	830	1365	450		260	175	345	1350	1225	930	670	770	1950	1200	1950	280	1200	22	1250	4800	5500	1.5	57	98.48	98.31	98.10				
500	1350	835	1510	450		265	175	350	1495	1370	1155							1400	26	1400	5900	6780	1.4	57	98.54	98.37	98.17				
630	1450	855	1570	485		275	185	370	1550	1415	1165							1700	30	1650	6800	7800	1.3	58	98.65	98.50	98.32				
800	1470	865	1680	490		280	190	380	1660	1525	1265							2000	35	2000	8000	9200	1.1	59	98.75	98.61	98.43				
1000	1620	1000	1855	540	250	300	205	400	1830	1675	1365	820	1000	200	70	50	2550	42	2600	1450	2600	450	2400	9400	10800	8	1	60	98.82	98.68	98.52
1250	1710	1020	1880	570		305	210	420	1855	1700	1385						2900	50					2800	11500	13100		0.9	62	98.85	98.72	98.57
1600	1770	1020	2105	590		320	225	420	2075	1885	1605						3700	60					3500	13500	15520		0.9	62	98.93	98.81	98.67
2000	1890	1180	2200	630		330	230	480	2170	1980	1625						4500	72					4400	16000	18000		0.8	63	98.98	98.86	98.72
2500	2000	1190	2275	670		385	260	490	2245	2055	1635	5350	91	5000	18000	20700	0.7	65	99.08	98.97	98.85										
3150	2200	1210	2300	735		395	270	510	2270	2080	1645	6400	93	6000	20500	23575	0.6	66	99.15	99.06	98.94										